



PRE-BUDGET SUBMISSION 2018

Childhood Development Initiative: Wednesday, September 13, 2017.

The Childhood Development Initiative (CDI) works with organisations which commission services in the children, families and communities sector. CDI provides practical, hands-on 'know how' in how to design, deliver, adapt and evaluate high quality, effective interventions. We offer a tailored package of needs analysis, service design, staff training, ongoing mentoring, and capacity building in relation to evaluation, monitoring and quality assurance.

A: Funding Requirements for 2018

CDI would like to make a Pre-Budget Submission to the Minister for Finance to inform Budget 2018. Funding is required to deliver the following CDI coordinated interventions in 2018 and into the future:

1. Chit Chat
2. Doodle Den
3. Doodle Families
4. Parental Support
5. Restorative Practices
6. Ante-Natal to Three Initiative (ATTI)
7. Family Links
8. Quality Services, Better Outcomes.

The majority of CDI's work takes place in the community in Tallaght West, with some projects reaching into other parts of the country and a national remit. This submission includes details of CDI's core funding requirements for 2018, plus the resourcing needed to build towards sharing of the benefits and learning with more communities in the years ahead.

In this proposal CDI is seeking to secure a funding agreement to ensure continued delivery of the CDI's services to the end of 2018 and also for resources to enable it to plan and resource its work going forward which can also be shared meaningfully with other agencies, service providers and communities.

B: Funding and Policy Context

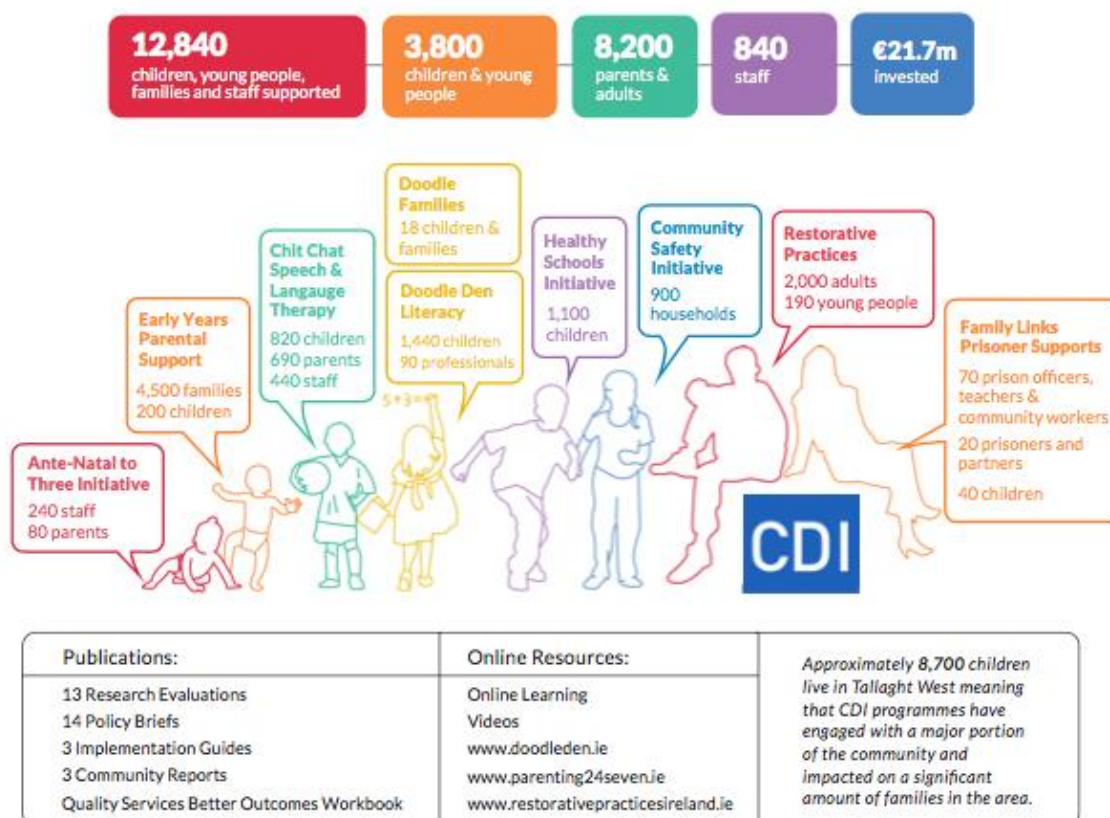
PEIP: 2007-2013

Based in Tallaght West, from 2007 to 2013 CDI was one of three Prevention and Early Intervention Programme (PEIP) sites established to develop and evaluate prevention and early intervention programmes. The PEIP was match-funded by the Department of Children and Youth Affairs (DCYA) and the Atlantic Philanthropies (AP) and €17m was invested in CDI co-ordinated programmes.

ABC Programme: 2013-present

In 2013 CDI became one of 13 programmes nationwide funded under the Area Based Childhood (ABC) Programme (again match-funded by DCYA and AP). Under the ABC Programme CDI received €4.1m to coordinate six prevention and early intervention programmes in Tallaght West up to 2016. Funding has been extended to December 2017, with an indication of further funding to Summer 2018, but no definite commitment. A small part of CDI's work is funded from other sources (Family Links programme).

C: CDI Impact and Outcomes 2007-2016



D: Requirements and Plans per Programme Area

1. Chit Chat

Chit Chat, CDI's Early Intervention Speech and Language Therapy Service, was designed and developed to integrate education, health and childcare provision; to promote accessibility of services, increase attendance rates, facilitate collaboration between educational, early years and health staff, and achieve more positive outcomes for children and their families.

Findings from the Chit Chat SLT evaluation

- 18% of children were discharged from the service as being within normal limits in comparison to 11% of children in the HSE service
- Up to 60% of the children had not previously been referred to an SLT service
- Significantly improved parental participation and waiting times
- The CDI service saw children at a significantly younger age than other services and with a shorter waiting time than any other service apart from inpatient services
- Parents found the on-site delivery was less disruptive than clinic based services.

Service Plans

- Sept 2017 to Aug 2018: Two SLTs working with 68 children and their families in Tallaght West
- Sept 2018 to June 2019: Sustain current Chit Chat model in Tallaght West and add four additional SLTs funded through the Schools Excellence Fund to support a cluster of schools with the Chit Chat model.

Future Mainstreaming Plans

- HSE to incorporate Chit Chat model in their SLT service delivery

- Chit Chat SLT is implemented in / offered to all DEIS Schools in Ireland
- Third level universities to incorporate training at undergraduate and post training level for teachers and early year's professionals on speech and language development and communication.

2. Doodle Den

Doodle Den is an after-school literacy programme targeted at children aged 5-6 in senior infants. It has a child, parent, and family component, and places a strong emphasis on parental engagement. The programme is currently being delivered to 255 children in 17 groups in schools and community centres located in Tallaght, Carlow and Dublin City Centre.

Findings from the Doodle Den evaluation

- Seven percentile point gain in overall literacy ability and twelve percentile points when combined with teachers' ratings
- Teacher's reported a seven percentile point decrease in negative behaviours
- Parents reported an increase in child's reading at home (10 percentile points).
- The programme was found to not only improve children's literacy, but also school attendance, family library use, family reading and children's social skills

Service Plans

- Sept 2017 to June 2018: 17 groups delivering Doodle Den with CDI funding, nine in Tallaght West and eight in other ABC areas
- Sept 2018 to June 2019: Sustain current Doodle Den model in Tallaght, and offer Quality Assurance to Docklands and Grangegorman ABCs, supporting 255 children. Target running Doodle Den in 30 DEIS schools supporting 450 children.

Future Mainstreaming Plans

- CDI funded to deliver and scale up Doodle Den
- Doodle Den is implemented in / offered to all DEIS Schools by Sept 2020.

3. Doodle Families

Doodle Families is a Family Literacy Programme delivered in two components – one for parents and the other for children aimed at First Class. An initial programme was delivered and evaluated in Limerick and a redesigned programme is currently about to be delivered in Limerick and Dublin and this will be evaluated.

Service Plans

- Sept 2017 to June 2018:
 - Pilot phase of redesigned programme to be carried out in Limerick and Dublin involving eight groups
 - Quasi Experimental study of Doodle Families
 - Development of Doodle Families policy paper
 - If successful – roll out of the programme to DEIS schools.
- March to June 2018: Expand delivery and Quality Assurance to 16 groups
- Sept 2018 to June 2019: Expand delivery and Quality Assurance to 25 groups.

4. Parental Support

CDI supports nine early years' services in Tallaght West through the provision of a dedicated Parent Carer Facilitator (PCF), who works with parents by identifying needs, offering support to address any issues and promote the achievement of children's developmental milestones. In addition, the PCF delivers a formal evidence based parent education programme (Parents Plus). Over 450 families are supported per annum in Tallaght West.

Findings from the Early Years evaluation

- The PCF role has been demonstrated to reduce parental stress, improve relationships between parents and their children and support a positive home learning environment

- The more sessions of a parenting course that parents attended the more beneficial the home learning environment (HLE) was.

Future Mainstreaming Plans

- Continue to support the nine PCFs in Tallaght West
- Parental support offered in all early years services in Tallaght West, as an integral aspect of delivery
- The CDI parental support model is replicated in other communities and settings.

5. Restorative Practices

Restorative Practices is an evidence-based approach that helps develop and sustain strong and happy organisations and communities by actively developing good relationships, preventing the escalation of conflict and handling conflict in a creative and healthy manner.

CDI has trained over 2,000 adults and 190 children in Restorative Practices, and evaluations have consistently found that participants are readily able to use the approach; that relationships in the workplace improve, and that where conflict occurs, it is resolved more quickly.

Findings from the Restorative Practice evaluation

- A reduction by 43% in work place conflicts in organisations that adopted an RP approach
- 87% of those who undertook training reported being more confident in dealing with conflict
- Significant improvement in relationships with greatest gains between organisations and service users.

Service Plans

2018

- Continue Restorative Practices training in Tallaght West with up to 50 trainers trained by March 2018 with 16 more trainers qualified by February 2019.

Future Plans

- Funding required to fund RP trainers x 100 and establish Restorative Practices Ireland (RPI) as a self-sustaining organisation by 2020
- Departments of Education, Health, Children and Justice co-fund a national office and staff for RPI to provide a professional development and support body for Restorative Practices practitioners and trainers
- All family support, schools, social work, social care, youth and community work, and Garda and prison officer training nationwide to be developed to include Restorative Practices.

6. Ante-Natal to Three Initiative (ATTI)

The Ante-Natal to Three Initiative (ATTI) is an interagency collaboration that brings people together from local primary care services, early years' organisations, the Coombe Women and Infants University Maternity Hospital, Tusla, and family support specialist services, to maximise the quality, co-ordination, collaboration and improved access of services for pregnant women and their children up to three years of age.

Findings from the ATTI evaluation:

- 46% of respondents said ATTI had played an important role in improving service-quality
- 50% attributed to ATTI improvements in service coordination and collaboration relevant to 0-3s in Tallaght West over the previous two years
- 42% of respondents observed that ATTI had contributed to improved service access for children and families.

Service Plan

- Manage and develop ATTI and the Infant Mental Health Network up to 2020.

Future Plans

- Continue funding of ATTI and the Infant Mental Health Network

- Improve co-ordination of and access to services for pregnant mothers and children up to three in Tallaght West and beyond.
- Influence the training of GPs, PHNs and Midwives to incorporate the challenges of working in disadvantaged communities

7. Family Links

The programme involves two core elements: increased awareness and support amongst prison staff on the importance of prisoners maintaining good family relationships, and delivery of a bespoke parent education programme for parents in prison and their partners.

Findings from the Family Links evaluation

- Both fathers and mothers felt supported through the group nature of the programme
- Mothers felt more empowered
- Communication improved between fathers and mothers.

Service Plans

- Funding secured through Irish Prison Service (IPS) until Dec 2017
- Funding for 2018 to be confirmed.

8. Quality Services Better Outcomes (QSBO)

QSBO is a practical resource developed by CDI for frontline staff, service managers, organisations and communities that are implementing, or intend to implement, evidence informed programmes and services for children, families and communities.

There are five key areas through which CDI supports organisations:

- Use a logic model approach
- Capacity building with key staff and managers in relation to coaching for quality outcomes
- Advising on organisational change and culture which is key to supporting the implementation process, assessing readiness to change and identifying what supports are needed
- Mentoring on leadership approaches and the importance of being a leader in managing successful change
- Incorporating evaluation to measure outcomes achieved.

Service Plan

- Scope opportunities into 2018 and the future
- Develop capacity building packages
- Develop funding plan to resource this area of work.

Marian Quinn, CEO, Childhood Development Initiative.

marian@twcdi.ie

(01) 494 0030.

The Area Based Childhood Programme 2013–2017

